

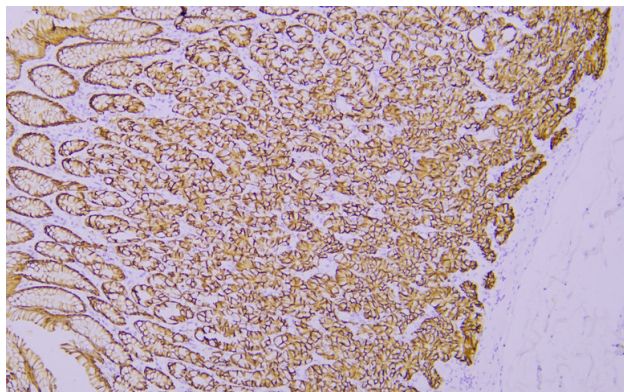


# Claudin 18 rabbit mAb(ABT185R)

<b>Catalog No</b>	YP-Ab-15494
<b>Isotype</b>	IgG
<b>Reactivity</b>	Human
<b>Applications</b>	IHC;IF
<b>Gene Name</b>	CLDN18 UNQ778/PRO1572
<b>Protein Name</b>	Claudin 18
<b>Immunogen</b>	Synthesized peptide derived from human Claudin 18
<b>Specificity</b>	This antibody detects endogenous levels of Claudin 18 at Human
<b>Formulation</b>	Liquid in PBS containing 50% glycerol, 0.5% BSA and 0.02% sodium azide.
<b>Source</b>	Polyclonal, Rabbit,IgG
<b>Purification</b>	The antibody was affinity-purified from Cell supernatant by affinity-chromatography using specific immunogen.
<b>Dilution</b>	IHC-p 1:100-1:200. IF 1:50-200
<b>Concentration</b>	1 mg/ml
<b>Purity</b>	≥90%
<b>Storage Stability</b>	-20°C/1 year
<b>Synonyms</b>	Claudin-18
<b>Observed Band</b>	
<b>Cell Pathway</b>	Cell junction, tight junction . Cell membrane ; Multi-pass membrane protein . Localizes to tight junctions in epithelial cells. .
<b>Tissue Specificity</b>	Isoform A1: Expression is restricted to the lung (PubMed:19047087). Isoform A2: Expression is restricted to the stomach mucosa where it is predominantly observed in the epithelial cells of the pit region and the base of the gastric glands including exocrine and endocrine cells (at protein level) (PubMed:19047087).
<b>Function</b>	function:Plays a major role in tight junction-specific obliteration of the intercellular space, through calcium-independent cell-adhesion activity.,similarity:Belongs to the claudin family.,tissue specificity:Concentrated at the cell-cell borders of epithelial cells.,
<b>Background</b>	
<b>matters needing attention</b>	Avoid repeated freezing and thawing!
<b>Usage suggestions</b>	This product can be used in immunological reaction related experiments. For more information, please consult technical personnel.



## Products Images



Immunohistochemical analysis of paraffin-embedded human Stomach. 1, Antibody was incubated at 4° overnight. 2, Citrate buffer of pH6.0 was used for antigen retrieval. 3, Secondary antibody was diluted at 1:200(room temperature, 30min).